

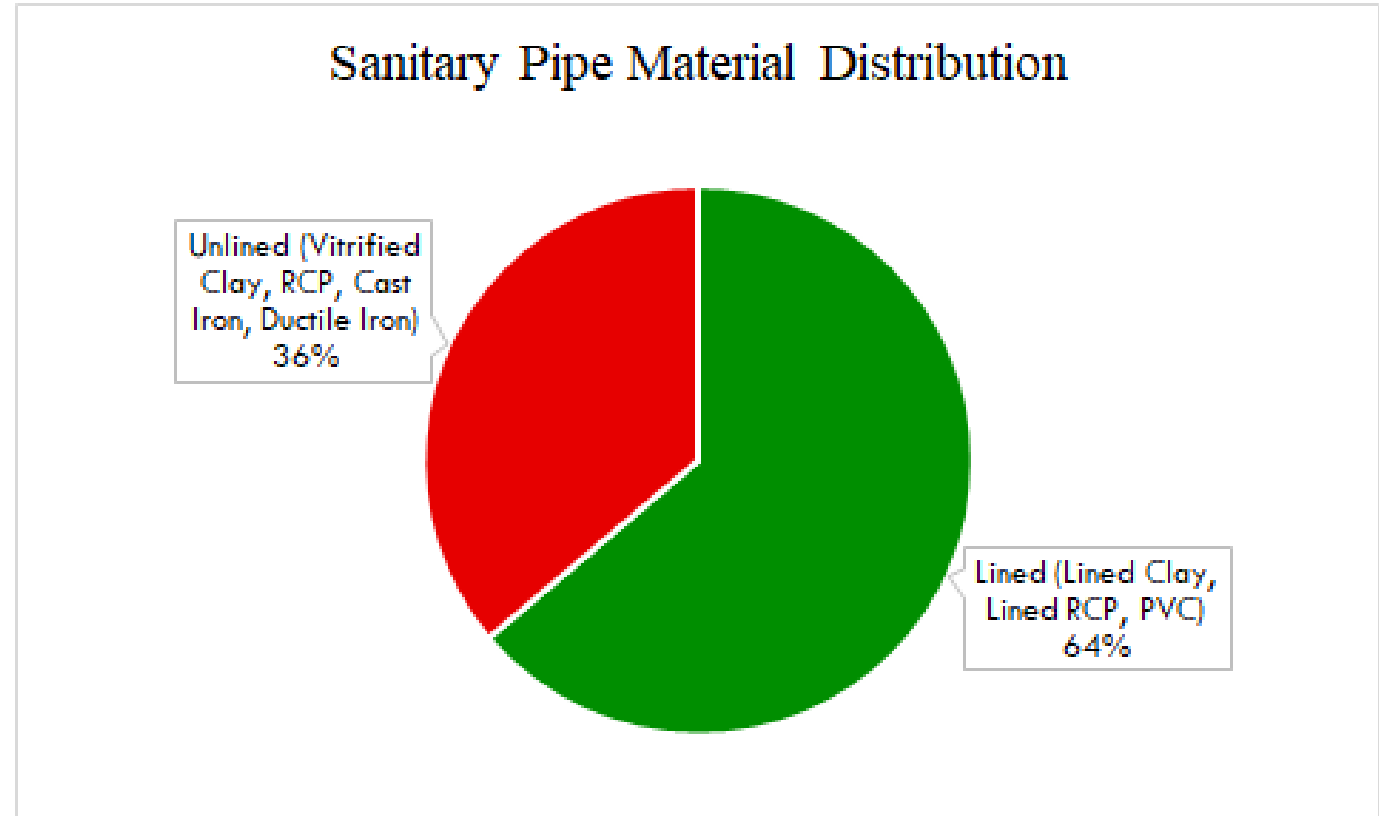
VILLAGE OF FOX POINT
SCHOOL ROAD



Lined & Unlined Sanitary Pipes

- Lined: Lined Clay, Lined RCP, PVC (23.8 Miles)
- Unlined: Vitrified Clay, Unlined RCP, Cast Iron, Ductile Iron (13.5 Miles)

Total Miles of Sanitary Pipes: 37.3 Miles



An average of 3/4 miles of sanitary sewer is replaced or lined annually. At this rate, it would take approximately 18 years to line and repair the remaining unlined sanitary pipes in the Village.

The Village of
Whitefish Bay
Milwaukee County
Wisconsin

